

Motor
ambar



869

22

AVAILABLE SPACE
±16,000 – 20,000 SF

- 24' - 25' Clear Height
- Pallets System Ready
- Multiples Docks

FOR RENT

±16K-20K NEWLY BUILT WAREHOUSE SPACE | Cataño, PR



787-977-7373 | pcc-cw.com
info@propertyconceptscommercial.com

Lic. E-70



CUSHMAN &
WAKEFIELD

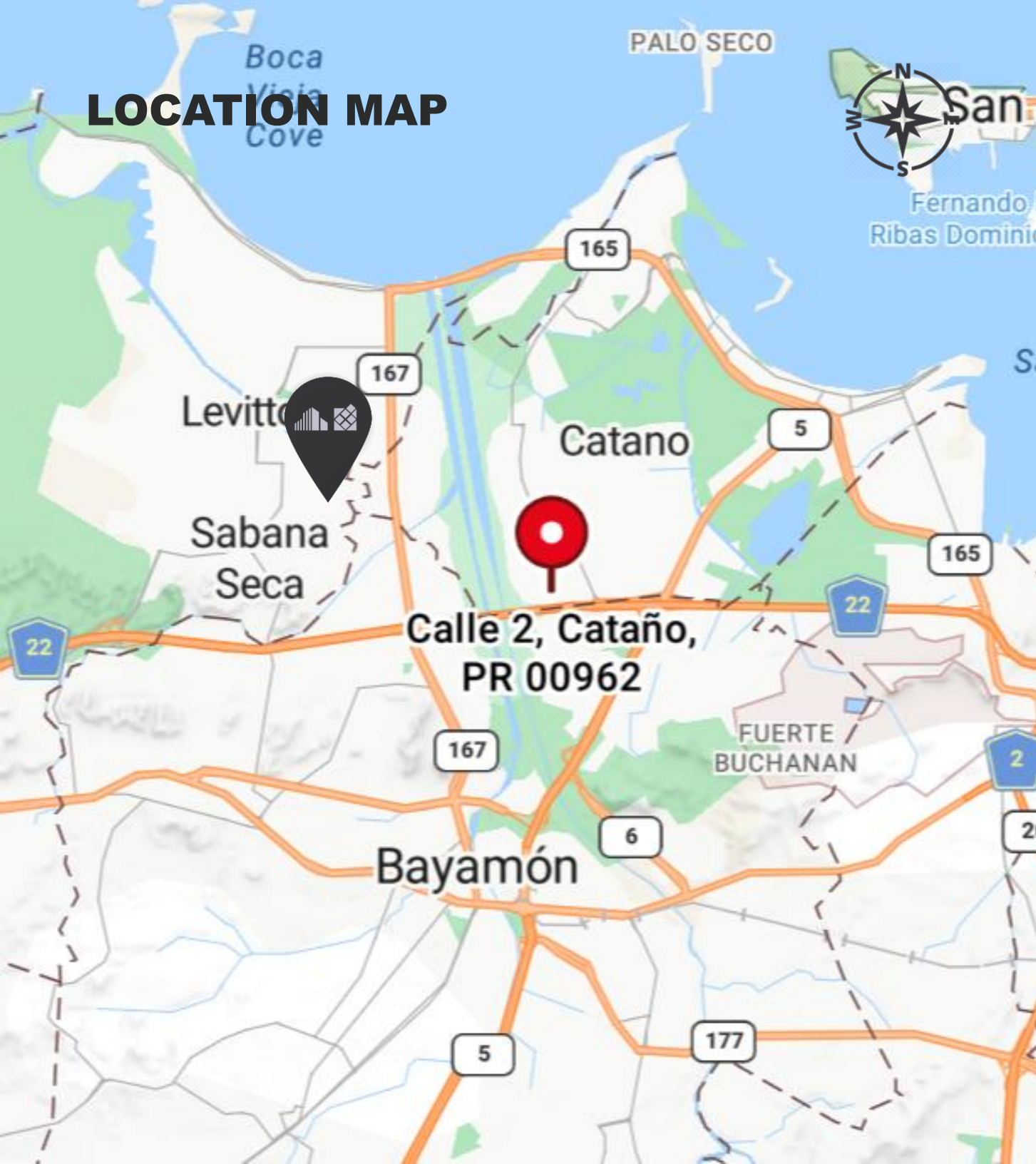


PROPERTY
CONCEPTS
COMMERCIAL

Westgate Industrial Park | Barrio Palmas, Cataño

- Move-in ready space
- ±16,000 – 20,000 SF Shared Industrial Space
- Potential 2,500 Pallet Positions with Existing Racking & Wire Decking
- 24'–25' clear height
- Fully sprinklered
- Multiple dock-high loading doors
- 24/7 controlled access
- Optimized ventilation and airflow
- Functional layout for manufacturing, storage & logistics
- Truck parking
- Foreign-Trade Zone (FTZ) benefits
- On-site solar power system + backup generator + substation
- Strategic access to PR-22
- Close proximity to Port of San Juan

LOCATION MAP



Location:
Westgate Industrial Park,
No. 515 2nd Street,
Cataño, Puerto Rico

Coordinates:
18.425413, -66.151060



CLICK [HERE](#) TO GO TO [MAP](#)

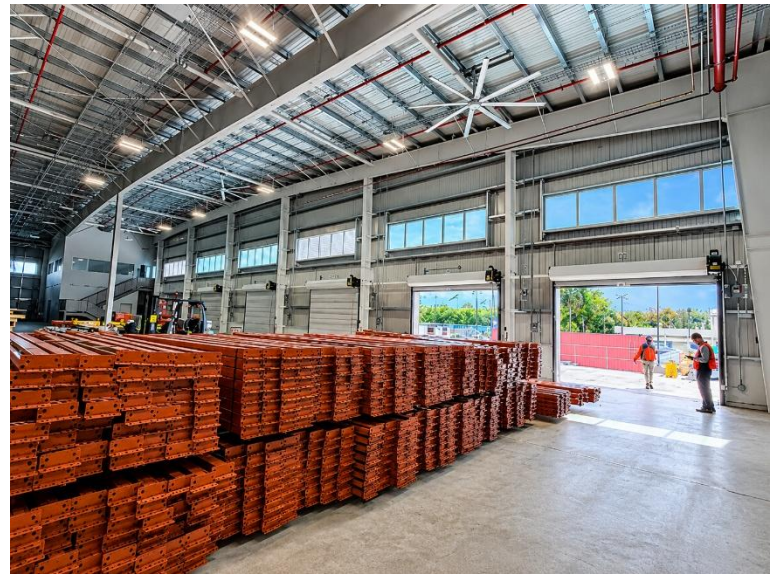
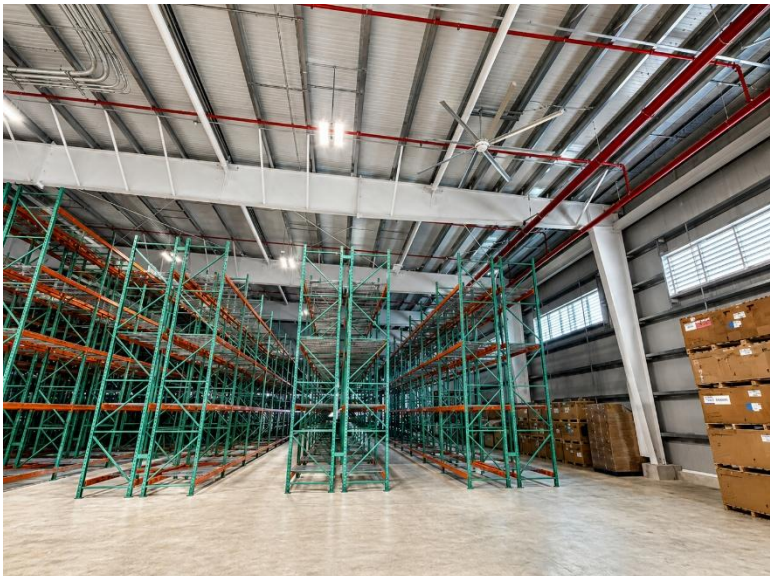
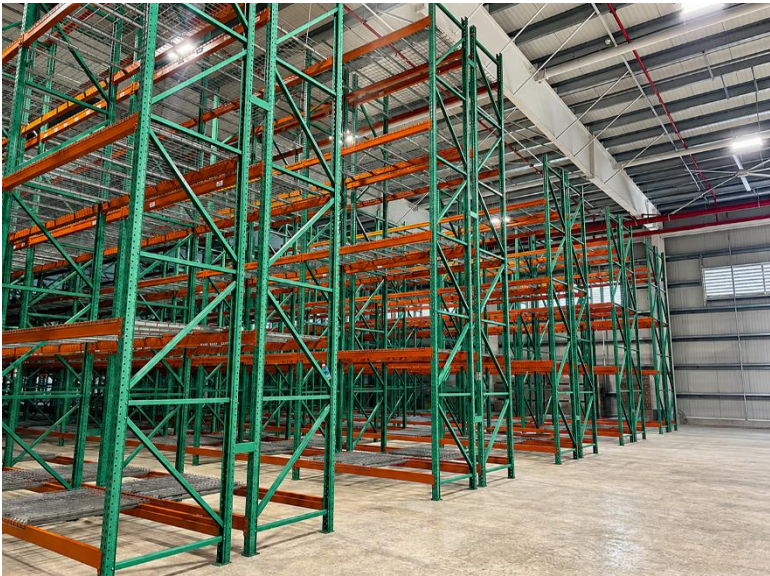
AERIAL VIEW



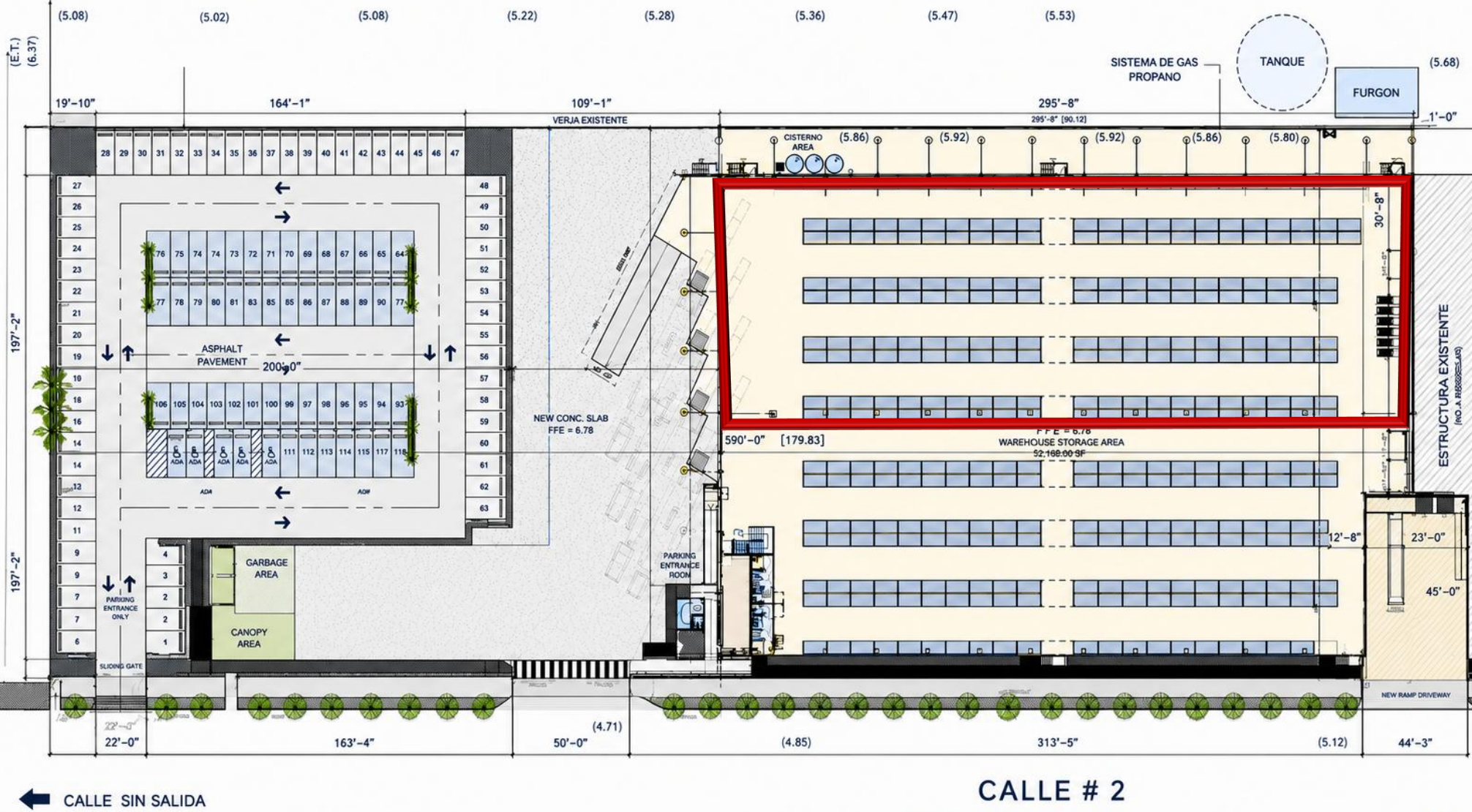
PHOTOS - Exterior



PHOTOS – Interior



SITE PLAN



← CALLE SIN SALIDA

CALLE # 2

ENCINTADO —

S.M.H.
IE: 4.52

FLOOR PLAN

